



Location: CMA1b - Oil St Community Liaison Centre

Report on 24-hour TSP monitoring

Action Level ($\mu\text{g}/\text{m}^3$) - 176.7

Limit Level ($\mu\text{g}/\text{m}^3$) - 260

Date	Sampling Time	Weather Condition	Filter paper no.	Filter Weight, g		Elapse Time, hr		Sampling Time, hr	Flow Rate, m^3/min			Total Volume, m^3	TSP Level, $\mu\text{g}/\text{m}^3$
				Initial	Final	Initial	Final		Initial, Q_{si}	Final, Q_{sf}	Average		
30-Mar-12	8:00	Cloudy	002364	2.8171	3.0519	744.17	768.18	24.01	1.01	1.13	1.07	1542	152
3-Apr-12	8:00	Cloudy	002508	2.7763	3.0530	771.18	795.17	23.99	1.22	1.22	1.22	1754	158
9-Apr-12	8:00	Fine	002545	2.7364	2.8212	798.17	822.17	24.00	1.08	1.01	1.04	1501	56
16-Apr-12	8:00	Rainy	002613	2.7639	2.8950	825.17	849.17	24.00	1.21	1.17	1.19	1717	76
20-Apr-12	8:00	Rainy	002670	2.7760	2.8975	852.17	876.73	24.56	1.08	0.99	1.03	1522	80

* Due to lack of electricity supply, the 24 hr-TSP was rescheduled from 26 Apr 2012 to 30 Apr 2012

Report on 1-hour TSP monitoring

Action Level ($\mu\text{g}/\text{m}^3$) - 320.1

Limit Level ($\mu\text{g}/\text{m}^3$) - 500

Date	Sampling Time	Weather Condition	Filter paper no.	Filter Weight, g		Elapse Time, hr		Sampling Time, hr	Flow Rate, m^3/min			Total Volume, m^3	TSP Level, $\mu\text{g}/\text{m}^3$
				Initial	Final	Initial	Final		Initial, Q_{si}	Final, Q_{sf}	Average		
31-Mar-12	9:00	Cloudy	002519	2.7884	2.7975	768.18	769.18	1.00	1.22	1.22	1.22	73	124
31-Mar-12	10:00	Cloudy	002517	2.7599	2.7683	769.18	770.18	1.00	1.22	1.22	1.22	73	115
31-Mar-12	13:00	Cloudy	002510	2.7077	2.7165	770.18	771.18	1.00	1.22	1.22	1.22	73	120
5-Apr-12	9:40	Cloudy	002551	2.7537	2.7646	795.17	796.17	1.00	1.20	1.17	1.18	71	153
5-Apr-12	10:45	Cloudy	002549	2.7334	2.7475	796.17	797.17	1.00	1.17	1.17	1.17	70	201
5-Apr-12	13:00	Cloudy	002547	2.7691	2.7826	797.17	798.17	1.00	1.17	1.17	1.17	70	192
11-Apr-12	8:40	Sunny	002622	2.7762	2.7888	822.17	823.17	1.00	1.16	1.21	1.19	71	177
11-Apr-12	9:45	Sunny	002619	2.7647	2.7717	823.17	824.17	1.00	1.14	1.16	1.15	69	101
11-Apr-12	10:52	Sunny	002616	2.7521	2.7611	824.17	825.17	1.00	1.19	1.19	1.19	71	126
17-Apr-12	8:25	Rainy	002643	2.7710	2.7884	849.17	850.17	1.00	0.94	1.03	0.99	59	293
17-Apr-12	13:27	Rainy	002403	2.7882	2.8039	850.17	851.17	1.00	1.20	1.17	1.18	71	221
17-Apr-12	15:00	Rainy	002376	2.7828	2.7910	851.17	852.17	1.00	1.17	1.17	1.17	70	117
21-Apr-12	8:37	Cloudy	002668	2.7557	2.7748	876.73	877.73	1.00	1.06	1.08	1.07	64	298
21-Apr-12	9:48	Cloudy	002777	2.8037	2.8218	877.73	878.73	1.00	1.22	1.24	1.23	74	246
21-Apr-12	10:50	Cloudy	002776	2.8087	2.8237	878.73	879.73	1.00	1.19	1.24	1.22	73	206
27-Apr-12	8:54	Cloudy	002774	2.8185	2.8412	879.73	880.73	1.00	1.19	1.24	1.22	73	311
27-Apr-12	9:58	Cloudy	002602	2.7476	2.7680	880.73	881.73	1.00	1.19	1.19	1.19	72	285
27-Apr-12	11:00	Cloudy	002495	2.7339	2.7533	881.73	882.73	1.00	1.10	1.10	1.10	66	294



Location: CMA2a - Causeway Bay Community Centre

Report on 24-hour TSP monitoring
 Action Level ($\mu\text{g}/\text{m}^3$) - 169.5
 Limit Level ($\mu\text{g}/\text{m}^3$) - 260

Date	Sampling Time	Weather Condition	Filter paper no.	Filter Weight, g		Elapse Time, hr		Sampling Time, hr	Flow Rate, m^3/min			Total Volume, m^3	TSP Level, $\mu\text{g}/\text{m}^3$
				Initial	Final	Initial	Final		Initial, Q_{si}	Final, Q_{sf}	Average		
30-Mar-12	8:00	Cloudy	002365	2.7816	3.0365	10521.90	10545.90	24.00	1.43	1.46	1.44	2079	123
3-Apr-12	8:00	Cloudy	002509	2.7369	3.0358	10548.90	10572.90	24.00	1.45	1.46	1.45	2094	143
9-Apr-12	8:00	Fine	002544	2.7467	2.8561	10576.31	10600.31	24.00	1.43	1.33	1.38	1984	55
16-Apr-12	8:00	Rainy	002614	2.7653	2.9141	10603.31	10627.31	24.00	1.45	1.45	1.45	2089	71
20-Apr-12	8:00	Cloudy	002669	2.7506	2.9139	10630.31	10654.31	24.00	1.45	1.36	1.41	2027	81
26-Apr-12	8:00	Cloudy	002578	2.7666	3.0111	10657.32	10681.32	24.00	1.38	1.41	1.40	2010	122

Report on 1-hour TSP monitoring
 Action Level ($\mu\text{g}/\text{m}^3$) - 323.4
 Limit Level ($\mu\text{g}/\text{m}^3$) - 500

Date	Sampling Time	Weather Condition	Filter paper no.	Filter Weight, g		Elapse Time, hr		Sampling Time, hr	Flow Rate, m^3/min			Total Volume, m^3	TSP Level, $\mu\text{g}/\text{m}^3$
				Initial	Final	Initial	Final		Initial, Q_{si}	Final, Q_{sf}	Average		
31-Mar-12	8:50	Cloudy	002520	2.7510	2.7608	10545.90	10546.90	1.00	1.46	1.46	1.46	87	112
31-Mar-12	9:58	Cloudy	002518	2.7646	2.7741	10546.90	10547.90	1.00	1.46	1.46	1.46	87	109
31-Mar-12	11:00	Cloudy	002516	2.7696	2.7784	10547.90	10548.90	1.00	1.46	1.46	1.46	87	101
5-Apr-12	10:00	Cloudy	002550	2.7447	2.7644	10573.31	10574.74	1.43	1.41	1.41	1.41	121	163
5-Apr-12	11:02	Cloudy	002548	2.7608	2.7776	10574.31	10575.31	1.00	1.36	1.36	1.36	81	206
5-Apr-12	13:00	Cloudy	002546	2.7417	2.7570	10575.31	10576.31	1.00	1.38	1.38	1.38	83	185
11-Apr-12	8:20	Sunny	002623	2.7806	2.7936	10600.31	10601.31	1.00	1.40	1.40	1.40	84	155
11-Apr-12	9:25	Sunny	002620	2.7731	2.7877	10601.31	10602.31	1.00	1.44	1.44	1.44	87	168
11-Apr-12	10:32	Sunny	002617	2.7758	2.7852	10602.31	10603.31	1.00	1.44	1.49	1.47	88	107
17-Apr-12	13:53	Rainy	002592	2.7589	2.7847	10627.31	10628.31	1.00	1.45	1.41	1.43	86	301
17-Apr-12	15:11	Rainy	002593	2.7435	2.7596	10628.31	10629.31	1.00	1.41	1.41	1.41	84	191
17-Apr-12	16:26	Rainy	002671	2.7826	2.7976	10629.31	10630.31	1.00	1.45	1.45	1.45	87	172
21-Apr-12	8:20	Cloudy	002779	2.7974	2.8180	10654.31	10655.31	1.00	1.45	1.41	1.43	86	240
21-Apr-12	9:37	Cloudy	002778	2.8059	2.8267	10655.31	10656.31	1.00	1.59	1.31	1.45	87	239
21-Apr-12	10:55	Cloudy	002775	2.8010	2.8247	10656.31	10657.31	1.00	1.45	1.45	1.45	87	272
27-Apr-12	8:45	Rainy	002601	2.7486	2.7702	10681.32	10682.32	1.00	1.41	1.41	1.41	85	256
27-Apr-12	9:47	Rainy	002603	2.7648	2.7861	10682.32	10683.32	1.00	1.45	1.41	1.43	86	248
27-Apr-12	10:50	Rainy	002485	2.7452	2.7669	10683.32	10684.32	1.00	1.43	1.43	1.43	86	253



Location: CMA3a - CWB PRE Site Office Area

Report on 24-hour TSP monitoring
 Action Level ($\mu\text{g}/\text{m}^3$) - 171
 Limit Level ($\mu\text{g}/\text{m}^3$) - 260

Date	Sampling Time	Weather Condition	Filter paper no.	Filter Weight, g		Elapse Time, hr		Sampling Time, hr	Flow Rate, m^3/min			Total Volume, m^3	TSP Level, $\mu\text{g}/\text{m}^3$
				Initial	Final	Initial	Final		Initial, Q_{si}	Final, Q_{sf}	Average		
30-Mar-12	8:00	Cloudy	002394	2.8078	3.1420	11167.79	11191.79	24.00	1.67	1.70	1.69	2427	138
3-Apr-12	8:00	Cloudy	002500	2.7420	3.1002	11194.79	11218.78	23.99	1.64	1.65	1.64	2367	151
9-Apr-12	8:00	Fine	002468	2.7211	2.8394	11221.79	11245.79	24.00	1.64	1.61	1.63	2340	51
17-Apr-12	8:00	Rainy	002649	2.7680	2.9995	11251.80	11275.80	24.00	1.64	1.49	1.57	2255	103
24-Apr-12	14:30	Rainy	002604	2.7454	2.8811	11327.95	11351.95	24.00	1.56	1.56	1.56	2249	60
26-Apr-12	8:00	Cloudy	002577	2.7576	3.0756	11351.95	11375.95	24.00	1.62	1.62	1.62	2330	136

* Due to lack of electricity supply, the 24 hr-TSPs were rescheduled from 16 and 20 April 2012 to 17 and 24 April 2012

Report on 1-hour TSP monitoring
 Action Level ($\mu\text{g}/\text{m}^3$) - 311.3
 Limit Level ($\mu\text{g}/\text{m}^3$) - 500

Date	Sampling Time	Weather Condition	Filter paper no.	Filter Weight, g		Elapse Time, hr		Sampling Time, hr	Flow Rate, m^3/min			Total Volume, m^3	TSP Level, $\mu\text{g}/\text{m}^3$
				Initial	Final	Initial	Final		Initial, Q_{si}	Final, Q_{sf}	Average		
31-Mar-12	9:00	Cloudy	002505	2.7330	2.7460	11191.79	11192.79	1.00	1.44	1.44	1.44	86	150
31-Mar-12	10:05	Cloudy	002504	2.7372	2.7461	11192.79	11193.79	1.00	1.57	1.57	1.57	94	94
31-Mar-12	13:00	Cloudy	002503	2.7528	2.7616	11193.79	11194.79	1.00	1.62	1.62	1.62	97	90
5-Apr-12	14:15	Cloudy	002470	2.7408	2.7556	11218.78	11219.78	1.00	1.54	1.59	1.57	94	158
5-Apr-12	15:19	Cloudy	002465	2.6969	2.7108	11219.78	11220.78	1.00	1.59	1.59	1.59	95	146
5-Apr-12	16:25	Cloudy	002466	2.7170	2.7294	11220.78	11221.78	1.00	1.44	1.44	1.44	86	144
11-Apr-12	13:00	Suuny	02555	2.7374	2.7474	11245.79	11246.79	1.00	1.58	1.61	1.59	96	105
11-Apr-12	14:09	Suuny	002610	2.7463	2.7524	11246.79	11247.79	1.00	1.61	1.61	1.61	96	63
11-Apr-12	15:40	Suuny	002608	2.7582	2.7657	11247.79	11248.79	1.00	1.56	1.53	1.54	93	81
17-Apr-12	13:00	Rainy	002573	2.7640	2.7919	11248.79	11249.80	1.01	1.59	1.59	1.59	97	289
17-Apr-12	14:08	Rainy	002648	2.7590	2.7801	11249.80	11250.80	1.00	1.62	1.64	1.63	98	216
17-Apr-12	17:03	Rainy	002647	2.7662	2.7804	11250.80	11251.80	1.00	1.54	1.54	1.54	92	154
21-Apr-12	13:00	Cloudy	002693	2.7671	2.7922	11294.42	11295.42	1.00	1.62	1.62	1.62	97	259
21-Apr-12	14:23	Cloudy	002684	2.7729	2.8020	11295.42	11296.42	1.00	1.57	1.57	1.57	94	309
21-Apr-12	16:41	Cloudy	002683	2.7868	2.8102	11296.42	11297.42	1.00	1.57	1.62	1.59	96	245
27-Apr-12	9:27	Rainy	002687	2.7718	2.7995	11375.96	11376.96	1.00	1.55	1.52	1.54	92	301
27-Apr-12	11:08	Rainy	002691	2.7640	2.7895	11376.96	11377.96	1.00	1.52	1.52	1.52	91	279
27-Apr-12	13:00	Rainy	002713	2.7797	2.8040	11377.96	11378.96	1.00	1.52	1.52	1.52	91	266



Location: CMA4a - SPCA

Report on 24-hour TSP monitoring

Action Level ($\mu\text{g}/\text{m}^3$) - 171.2
Limit Level ($\mu\text{g}/\text{m}^3$) - 260

Date	Sampling Time	Weather Condition	Filter paper no.	Filter Weight, g		Elapse Time, hr		Sampling Time, hr	Flow Rate, m^3/min			Total Volume, m^3	TSP Level, $\mu\text{g}/\text{m}^3$
				Initial	Final	Initial	Final		Initial, Q_{si}	Final, Q_{sf}	Average		
30-Mar-12	8:00	Cloudy	002429	2.7348	2.9972	14740.42	14764.42	24.00	1.15	1.16	1.16	1665	158
3-Apr-12	8:00	Cloudy	002499	2.7271	2.9937	14767.45	14791.45	24.00	1.15	1.16	1.15	1662	160
9-Apr-12	8:00	Fine	002467	2.7250	2.7885	14797.10	14821.10	24.00	1.12	1.12	1.12	1613	39
16-Apr-12	8:00	Rainy	002572	2.7777	2.9217	14824.10	14848.10	24.00	1.15	1.21	1.18	1696	85
20-Apr-12	8:00	Rainy	002646	2.7592	2.8622	14851.10	14875.10	24.00	1.15	1.15	1.15	1654	62
26-Apr-12	8:00	Cloudy	002682	2.7852	2.9998	14878.10	14902.10	24.00	1.15	1.15	1.15	1653	130

Report on 1-hour TSP monitoring

Action Level ($\mu\text{g}/\text{m}^3$) - 312.5
Limit Level ($\mu\text{g}/\text{m}^3$) - 500

Date	Sampling Time	Weather Condition	Filter paper no.	Filter Weight, g		Elapse Time, hr		Sampling Time, hr	Flow Rate, m^3/min			Total Volume, m^3	TSP Level, $\mu\text{g}/\text{m}^3$
				Initial	Final	Initial	Final		Initial, Q_{si}	Final, Q_{sf}	Average		
31-Mar-12	9:30	Cloudy	002496	2.7450	2.7515	14764.42	14765.45	1.03	0.93	0.88	0.90	56	116
31-Mar-12	10:35	Cloudy	002502	2.7468	2.7529	14765.45	14766.45	1.00	0.88	0.93	0.90	54	112
31-Mar-12	13:00	Cloudy	002501	2.7323	2.7349	14766.45	14767.45	1.00	0.99	0.88	0.93	56	46
5-Apr-12	14:00	Cloudy	002464	2.7449	2.7570	14794.10	14795.10	1.00	1.15	1.15	1.15	69	175
5-Apr-12	15:03	Cloudy	002469	2.7065	2.7129	14795.10	14796.10	1.00	1.15	1.15	1.15	69	92
5-Apr-12	16:07	Cloudy	002443	2.7164	2.7224	14796.10	14797.10	1.00	0.98	0.98	0.98	59	102
11-Apr-12	13:00	Sunny	002556	2.7614	2.7708	14821.10	14822.10	1.00	1.12	1.14	1.13	68	139
11-Apr-12	14:16	Sunny	002611	2.7556	2.7602	14822.10	14823.10	1.00	1.12	1.09	1.10	66	70
11-Apr-12	15:35	Sunny	002609	2.7567	2.7617	14823.10	14824.10	1.00	1.09	1.03	1.06	64	79
17-Apr-12	13:00	Rainy	002652	2.7902	2.7993	14848.10	14849.10	1.00	1.15	1.15	1.15	69	131
17-Apr-12	14:02	Rainy	002651	2.7789	2.7862	14849.10	14850.10	1.00	1.10	1.10	1.10	66	111
17-Apr-12	15:10	Rainy	002650	2.7777	2.7855	14850.10	14851.10	1.00	1.15	1.15	1.15	69	113
21-Apr-12	14:10	Cloudy	002692	2.7618	2.7804	14875.10	14876.10	1.00	1.15	1.15	1.15	69	270
21-Apr-12	15:12	Cloudy	002723	2.8109	2.8305	14876.10	14877.10	1.00	1.15	1.15	1.15	69	284
21-Apr-12	16:23	Cloudy	002694	2.7686	2.7828	14877.10	14878.10	1.00	1.07	1.10	1.08	65	218
27-Apr-12	8:42	Rainy	002686	2.7745	2.7956	14902.10	14903.10	1.00	1.18	1.15	1.16	70	302
27-Apr-12	9:44	Rainy	002688	2.7571	2.7758	14903.10	14904.10	1.00	1.18	1.18	1.18	71	265
27-Apr-12	10:48	Rainy	002689	2.7658	2.7832	14904.10	14905.10	1.00	1.18	1.18	1.18	71	247



Location: CMA5a - Children Garden opposite to Pedestrian Plaza

Report on 24-hour TSP monitoring

Action Level ($\mu\text{g}/\text{m}^3$) - 181
 Limit Level ($\mu\text{g}/\text{m}^3$) - 260

181
 260

Date	Sampling Time	Weather Condition	Filter paper no.	Filter Weight, g		Elapse Time, hr		Sampling Time, hr	Flow Rate, m^3/min			Total Volume, m^3	TSP Level, $\mu\text{g}/\text{m}^3$
				Initial	Final	Initial	Final		Initial, Q_{si}	Final, Q_{sf}	Average		
30-Mar-12	8:00	Cloudy	002397	2.8179	3.0870	15737.43	15761.43	24.00	1.22	1.23	1.22	1764	153
3-Apr-12	8:00	Cloudy	002513	2.7488	3.0384	15764.53	15788.53	24.00	1.25	1.25	1.25	1800	161
9-Apr-12	8:00	Fine	002626	2.7767	2.8627	15791.52	15815.52	24.00	1.25	1.24	1.24	1792	48
16-Apr-12	8:00	Rainy	002575	2.7550	2.7967	15802.44	15826.44	24.00	1.24	1.25	1.25	1794	23
20-Apr-12	8:00	Rainy	002660	2.8061	2.9125	15829.44	15853.44	24.00	1.03	1.09	1.06	1529	70
26-Apr-12	8:00	Cloudy	002661	2.7884	3.1176	15856.47	15880.47	24.00	1.47	1.48	1.48	2125	155

Report on 1-hour TSP monitoring

Action Level ($\mu\text{g}/\text{m}^3$) - 332
 Limit Level ($\mu\text{g}/\text{m}^3$) - 500

Date	Sampling Time	Weather Condition	Filter paper no.	Filter Weight, g		Elapse Time, hr		Sampling Time, hr	Flow Rate, m^3/min			Total Volume, m^3	TSP Level, $\mu\text{g}/\text{m}^3$
				Initial	Final	Initial	Final		Initial, Q_{si}	Final, Q_{sf}	Average		
31-Mar-12	9:31	Cloudy	002483	2.7170	2.7295	15761.53	15762.53	1.00	1.23	1.20	1.21	73	172
31-Mar-12	13:23	Cloudy	002481	2.7272	2.7400	15762.53	15763.53	1.00	1.23	1.23	1.23	74	174
31-Mar-12	15:00	Cloudy	002515	2.7038	2.7156	15763.53	15764.53	1.00	1.25	1.25	1.25	75	157
5-Apr-12	8:57	Cloudy	002629	2.7874	2.7989	15788.52	15789.52	1.00	1.22	1.22	1.22	73	157
5-Apr-12	10:18	Cloudy	002628	2.8051	2.8149	15789.52	15790.52	1.00	1.20	1.20	1.20	72	137
5-Apr-12	13:00	Cloudy	002627	2.7962	2.8089	15790.52	15791.52	1.00	1.20	1.22	1.21	73	175
11-Apr-12	10:32	Sunny	002560	2.7401	2.7491	15815.52	15816.52	1.00	1.19	1.21	1.20	72	125
11-Apr-12	11:35	Sunny	002561	2.7524	2.7617	15816.52	15817.52	1.00	1.19	1.19	1.19	71	131
11-Apr-12	13:00	Sunny	002571	2.7572	2.7628	15817.52	15818.52	1.00	1.19	1.21	1.20	72	78
17-Apr-12	13:00	Rainy	002402	2.7806	2.8042	15826.44	15827.44	1.00	1.20	1.20	1.20	72	329
17-Apr-12	14:00	Rainy	002657	2.7955	2.8095	15827.44	15828.44	1.00	1.22	1.22	1.22	73	191
17-Apr-12	15:11	Rainy	002656	2.7966	2.8122	15828.44	15829.44	1.00	1.20	1.20	1.20	72	217
21-Apr-12	9:01	Cloudy	002595	2.7434	2.7609	15853.44	15854.44	1.00	1.20	1.20	1.20	72	243
21-Apr-12	10:08	Cloudy	002597	2.7667	2.7826	15854.44	15855.44	1.00	1.06	1.06	1.06	64	249
21-Apr-12	13:00	Cloudy	002598	2.7690	2.7889	15855.47	15856.47	1.00	1.09	1.04	1.06	64	312
27-Apr-12	9:00	Rainy	002803	2.7425	2.7674	15880.47	15881.47	1.00	1.48	1.48	1.48	89	281
27-Apr-12	10:00	Rainy	002804	2.7373	2.7638	15881.47	15882.47	1.00	1.48	1.48	1.48	89	299
27-Apr-12	11:00	Rainy	002802	2.7395	2.7633	15882.47	15883.47	1.00	1.48	1.48	1.48	89	268



Location: MA1e - International Finance Centre (Eastern Wing)

Report on 24-hour TSP monitoring

Action Level ($\mu\text{g}/\text{m}^3$) - 173.4

Limit Level ($\mu\text{g}/\text{m}^3$) - 260

Date	Sampling Time	Weather Condition	Filter paper no.	Filter Weight, g		Elapse Time, hr		Sampling Time, hr	Flow Rate, m^3/min			Total Volume, m^3	TSP Level, $\mu\text{g}/\text{m}^3$
				Initial	Final	Initial	Final		Initial, Q_{si}	Final, Q_{sf}	Average		
30-Mar-12	8:00	Cloudy	002396	2.8079	3.0381	8412.37	8436.38	24.01	1.31	1.31	1.31	1889	122
3-Apr-12	8:00	Cloudy	002351	2.7932	3.0857	8439.38	8463.38	24.00	1.31	1.31	1.31	1883	155
9-Apr-12	8:00	Fine	002419	2.6980	2.7695	8466.39	8490.39	24.00	1.30	1.26	1.28	1844	39
17-Apr-12	8:00	Rainy	002636	2.7610	2.9133	8496.61	8520.60	23.99	1.33	1.22	1.27	1833	83
21-Apr-12	11:00	Cloudy	002781	2.8114	2.9427	8520.60	8544.60	24.00	1.30	1.30	1.30	1875	70
26-Apr-12	8:00	Cloudy	002526	2.7211	2.9329	8547.60	8571.60	24.00	1.30	1.30	1.30	1874	113

* Due to lack of electricity supply, the 24 hr-TSP was rescheduled from 20 April 2012 to 21 April 2012

Report on 1-hour TSP monitoring

Action Level ($\mu\text{g}/\text{m}^3$) - 325.1

Limit Level ($\mu\text{g}/\text{m}^3$) - 500

Date	Sampling Time	Weather Condition	Filter paper no.	Filter Weight, g		Elapse Time, hr		Sampling Time, hr	Flow Rate, m^3/min			Total Volume, m^3	TSP Level, $\mu\text{g}/\text{m}^3$
				Initial	Final	Initial	Final		Initial, Q_{si}	Final, Q_{sf}	Average		
31-Mar-12	13:12	Cloudy	002507	2.7531	2.7627	8436.38	8437.38	1.00	1.31	1.31	1.31	79	122
31-Mar-12	15:10	Cloudy	002386	2.8047	2.8152	8437.38	8438.38	1.00	1.31	1.31	1.31	79	133
31-Mar-12	16:19	Cloudy	002354	2.8134	2.8256	8438.38	8439.38	1.00	1.31	1.31	1.31	79	155
5-Apr-12	8:10	Cloudy	002358	2.8151	2.8287	8463.37	8464.39	1.02	1.31	1.31	1.31	80	170
5-Apr-12	9:20	Cloudy	002416	2.7167	2.7305	8464.39	8465.39	1.00	1.31	1.31	1.31	78	176
5-Apr-12	10:25	Cloudy	002480	2.7184	2.7301	8465.39	8466.39	1.00	1.31	1.31	1.31	78	149
11-Apr-12	13:00	Sunny	002562	2.7723	2.7776	8490.39	8491.39	1.00	1.30	1.28	1.29	77	69
11-Apr-12	14:05	Sunny	002566	2.7533	2.7598	8491.39	8492.39	1.00	1.28	1.25	1.27	76	86
11-Apr-12	15:07	Sunny	002564	2.7555	2.7626	8492.39	8493.39	1.00	1.19	1.25	1.22	73	97
17-Apr-12	8:23	Rainy	002404	2.7908	2.8039	8493.61	8494.61	1.00	1.35	1.35	1.35	81	161
17-Apr-12	13:00	Rainy	002305	2.8028	2.8132	8494.61	8495.61	1.00	1.35	1.35	1.35	81	128
17-Apr-12	14:35	Rainy	002639	2.7705	2.7783	8495.61	8496.61	1.00	1.35	1.35	1.35	81	96
21-Apr-12	8:40	Cloudy	002532	2.7643	2.7847	8544.60	8545.60	1.00	1.30	1.30	1.30	78	261
21-Apr-12	9:46	Cloudy	002530	2.7609	2.7808	8545.60	8546.60	1.00	1.30	1.30	1.30	78	255
21-Apr-12	10:51	Cloudy	002528	2.7793	2.7985	8546.60	8547.60	1.00	1.30	1.30	1.30	78	246
27-Apr-12	8:15	Rainy	002663	2.7835	2.8063	8571.60	8572.60	1.00	1.30	1.30	1.30	78	291
27-Apr-12	9:20	Rainy	002664	2.7873	2.8090	8572.60	8573.60	1.00	1.30	1.30	1.30	78	277
27-Apr-12	10:24	Rainy	002666	2.7611	2.7830	8573.60	8574.60	1.00	1.30	1.30	1.30	78	280



Location: MA1w - International Finance Centre (Western Wing)

Report on 24-hour TSP monitoring

Action Level ($\mu\text{g}/\text{m}^3$) - 173.4

Limit Level ($\mu\text{g}/\text{m}^3$) - 260

Date	Sampling Time	Weather Condition	Filter paper no.	Filter Weight, g		Elapse Time, hr		Sampling Time, hr	Flow Rate, m^3/min			Total Volume, m^3	TSP Level, $\mu\text{g}/\text{m}^3$
				Initial	Final	Initial	Final		Initial, Q_{si}	Final, Q_{sf}	Average		
30-Mar-12	8:00	Cloudy	002395	2.8127	3.0972	11540.72	11564.72	24.00	1.30	1.48	1.39	2007	142
3-Apr-12	8:00	Cloudy	002355	2.7978	3.1025	11567.72	11591.72	24.00	1.43	1.35	1.39	2004	152
9-Apr-12	8:00	Fine	002418	2.7281	2.8145	11594.72	11618.72	24.00	1.43	1.39	1.41	2030	43
16-Apr-12	8:00	Rainy	002569	2.7733	2.8921	11621.72	11645.72	24.00	1.32	1.37	1.34	1936	61
20-Apr-12	8:00	Rainy	002637	2.7697	2.9098	11648.71	11672.71	24.00	1.42	1.47	1.45	2081	67
26-Apr-12	8:00	Cloudy	002525	2.7564	2.9944	11675.71	11699.71	24.00	1.40	1.40	1.40	2016	118

Report on 1-hour TSP monitoring

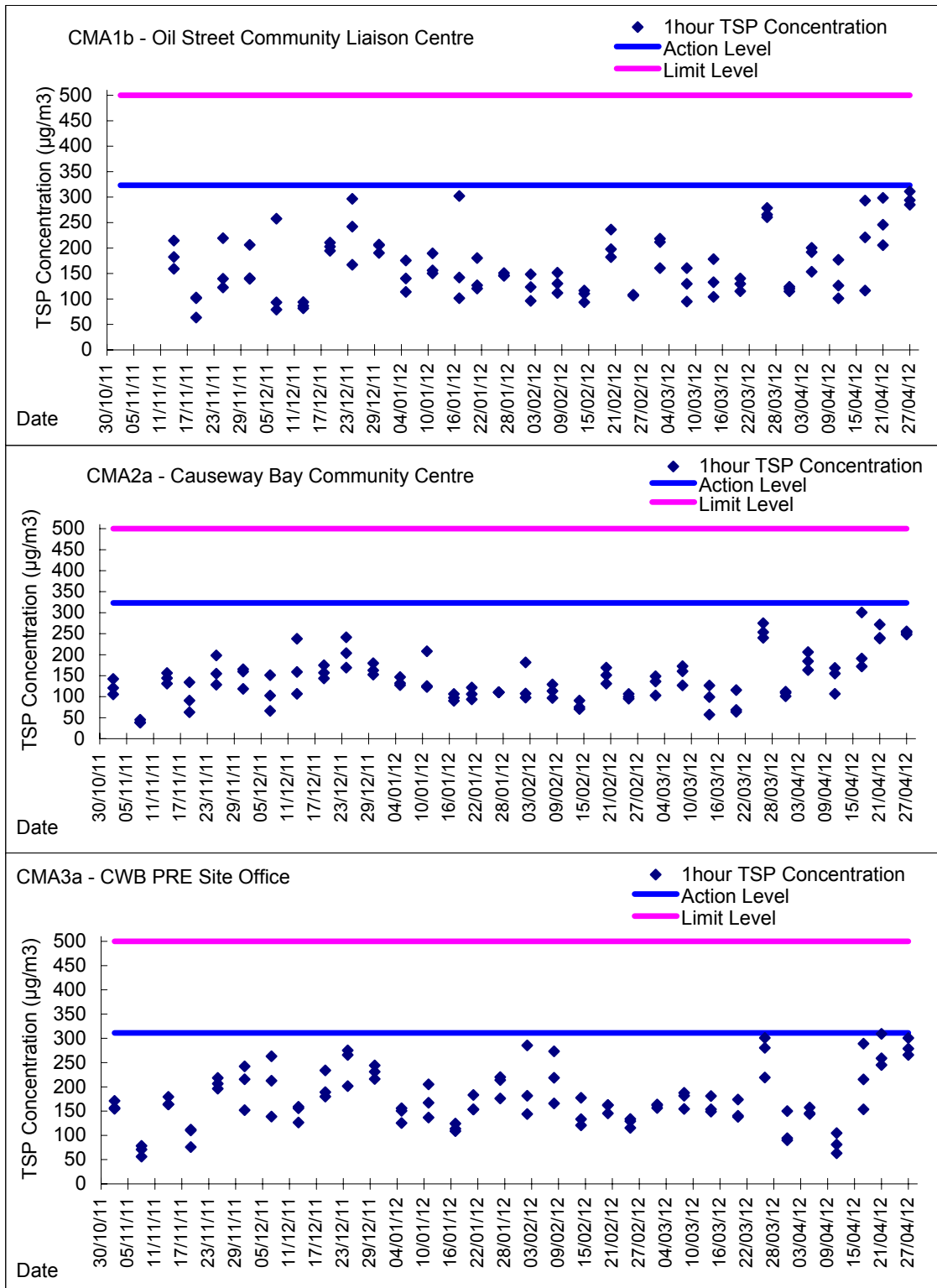
Action Level ($\mu\text{g}/\text{m}^3$) - 325.1

Limit Level ($\mu\text{g}/\text{m}^3$) - 500

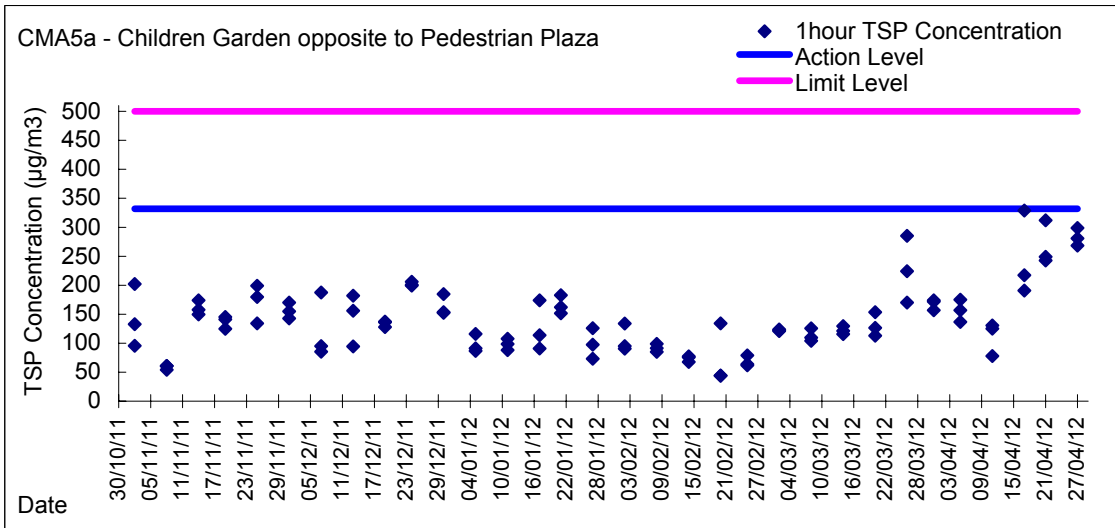
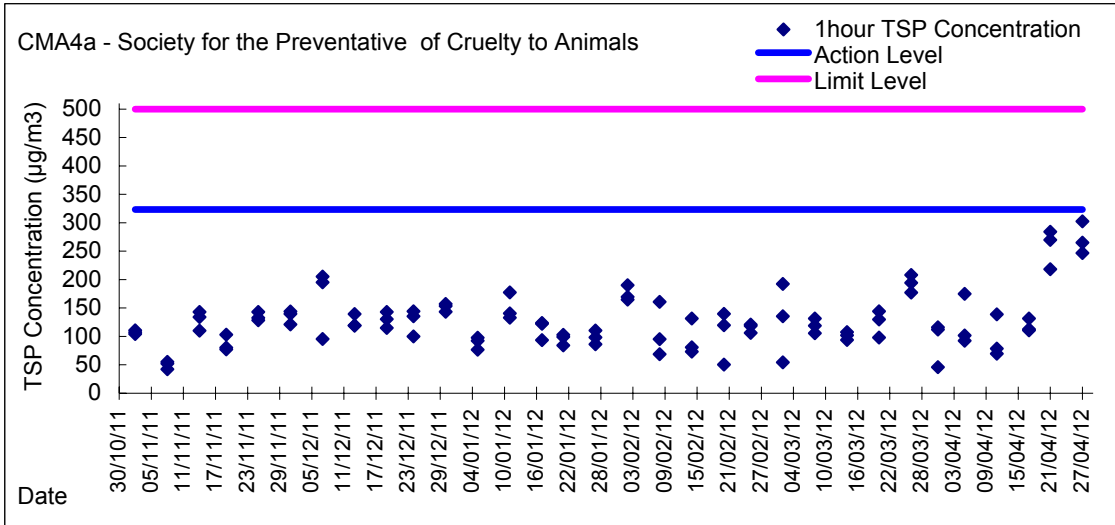
Date	Sampling Time	Weather Condition	Filter paper no.	Filter Weight, g		Elapse Time, hr		Sampling Time, hr	Flow Rate, m^3/min			Total Volume, m^3	TSP Level, $\mu\text{g}/\text{m}^3$
				Initial	Final	Initial	Final		Initial, Q_{si}	Final, Q_{sf}	Average		
31-Mar-12	13:20	Cloudy	002506	2.7261	2.7353	11564.72	11565.72	1.00	1.40	1.35	1.37	82	112
31-Mar-12	15:26	Cloudy	002399	2.7962	2.8087	11565.72	11566.72	1.00	1.26	1.40	1.33	80	157
31-Mar-12	16:31	Cloudy	002357	2.8239	2.8386	11566.72	11567.72	1.00	1.24	1.51	1.37	82	178
5-Apr-12	8:05	Cloudy	002294	2.7876	2.8002	11591.72	11592.72	1.00	1.30	1.48	1.39	83	151
5-Apr-12	9:07	Cloudy	002463	2.7592	2.7699	11592.72	11593.72	1.00	1.50	1.44	1.47	88	121
5-Apr-12	10:20	Cloudy	002461	2.7114	2.7219	11593.72	11594.72	1.00	1.24	1.46	1.35	81	130
11-Apr-12	13:00	Sunny	002563	2.7564	2.7624	11618.72	11619.72	1.00	1.47	1.47	1.47	88	68
11-Apr-12	14:02	Sunny	002565	2.7508	2.7564	11619.72	11620.72	1.00	1.41	1.43	1.42	85	66
11-Apr-12	15:10	Sunny	002568	2.7458	2.7524	11620.72	11621.72	1.00	1.43	1.45	1.44	86	76
17-Apr-12	8:14	Rainy	002400	2.7907	2.8046	11645.72	11646.72	1.00	1.46	1.48	1.47	88	158
17-Apr-12	13:00	Rainy	002377	2.7847	2.8036	11646.72	11647.71	0.99	1.44	1.53	1.48	88	215
17-Apr-12	14:35	Rainy	002638	2.7629	2.7754	11647.71	11648.71	1.00	1.46	1.48	1.47	88	142
21-Apr-12	8:46	Cloudy	002531	2.7428	2.7617	11672.71	11673.71	1.00	1.42	1.42	1.42	85	222
21-Apr-12	9:51	Cloudy	002529	2.7513	2.7711	11673.71	11674.71	1.00	1.42	1.38	1.40	84	236
21-Apr-12	10:57	Cloudy	002527	2.7642	2.7847	11674.71	11675.71	1.00	1.38	1.33	1.36	81	252
27-Apr-12	8:07	Rainy	002662	2.7940	2.8219	11699.71	11700.71	1.00	1.51	1.51	1.51	91	307
27-Apr-12	9:27	Rainy	002665	2.7770	2.8017	11700.71	11701.71	1.00	1.47	1.47	1.47	88	280
27-Apr-12	10:30	Rainy	002667	2.7565	2.7825	11701.71	11702.71	1.00	1.49	1.49	1.49	89	291



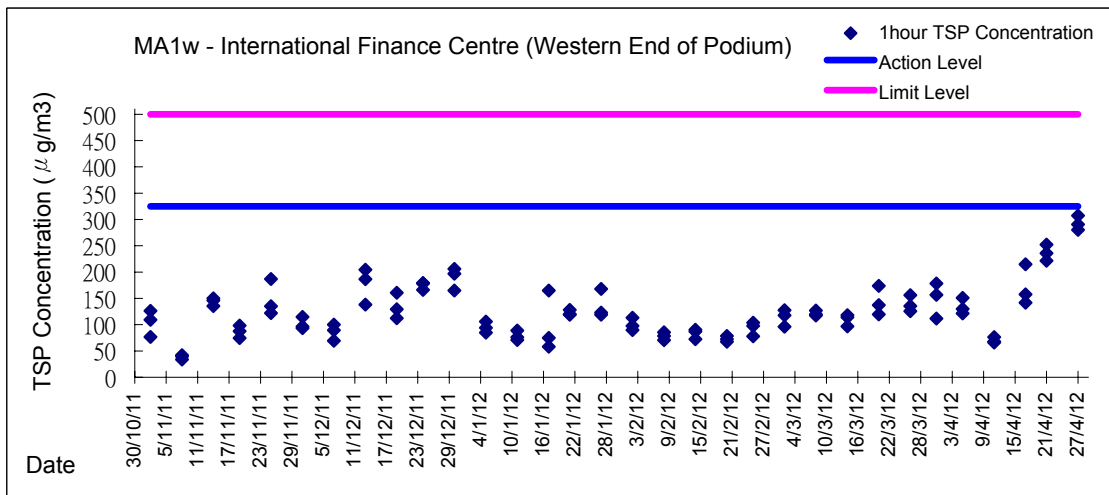
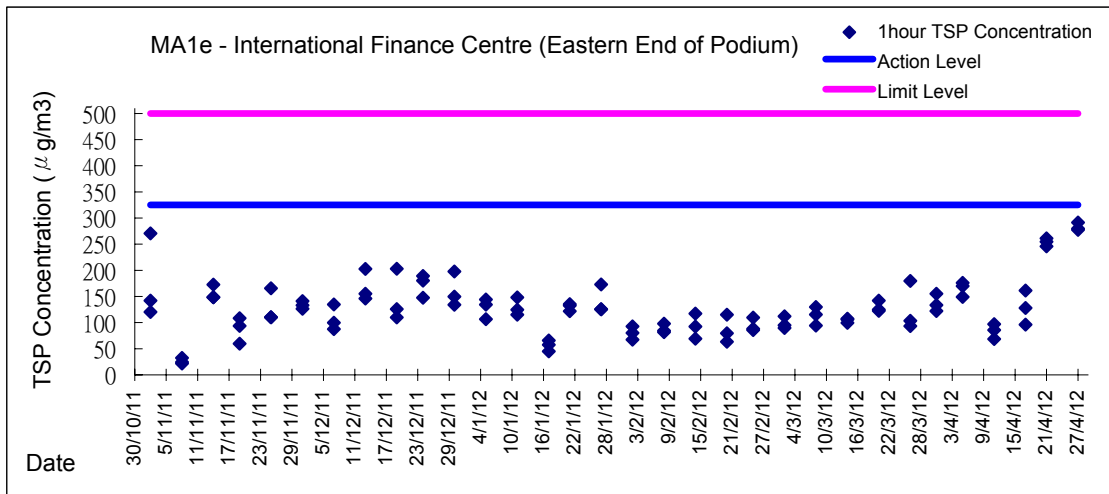
Graphic Presentation of 1 hour TSP Result



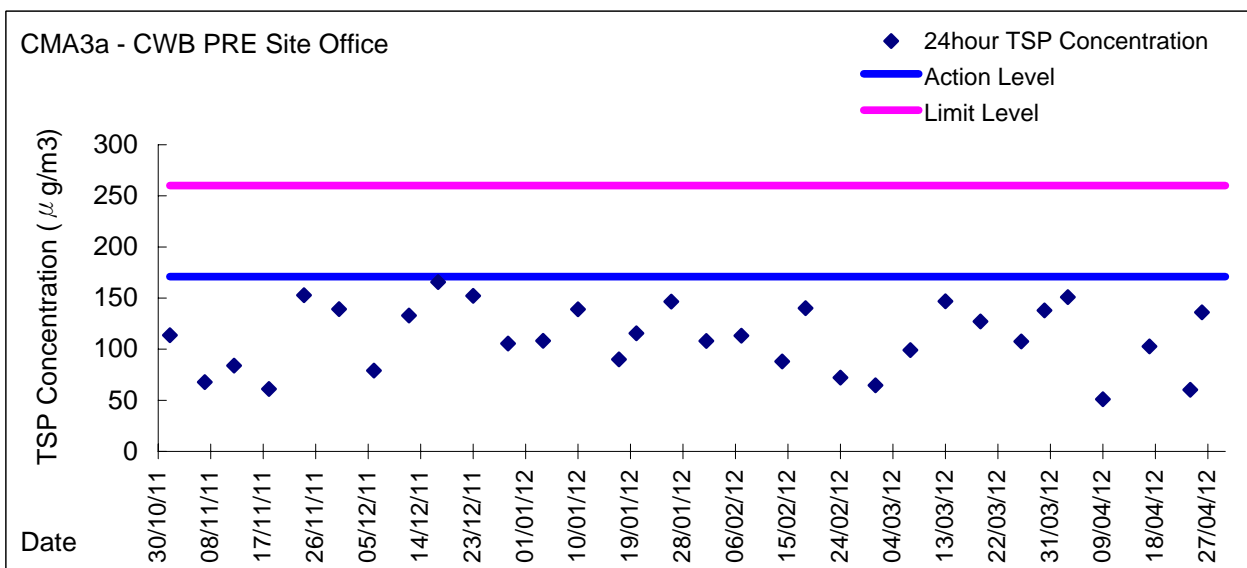
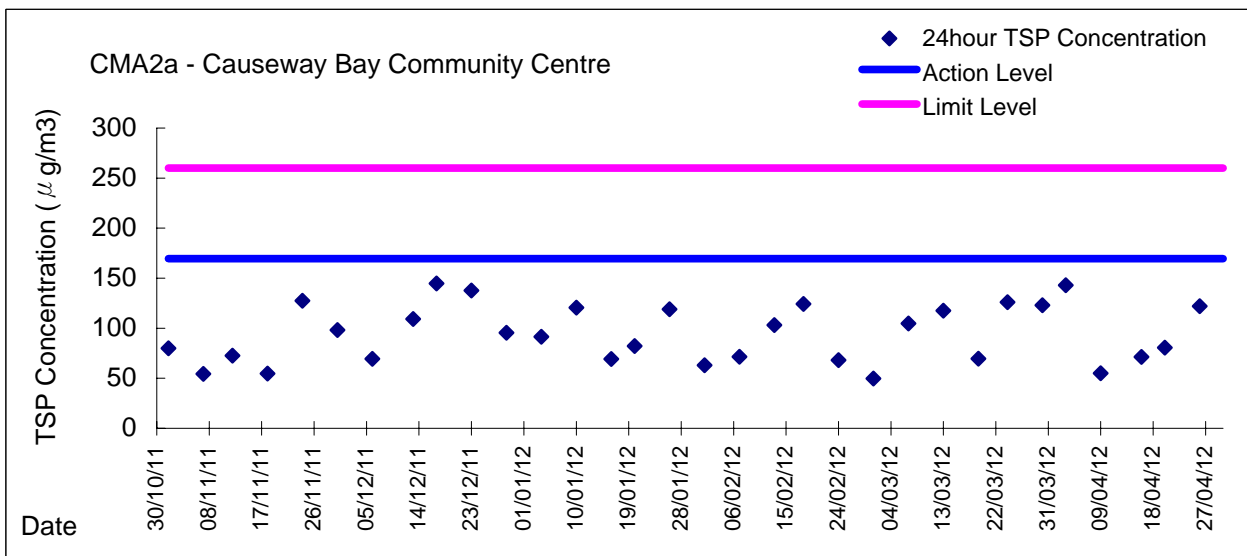
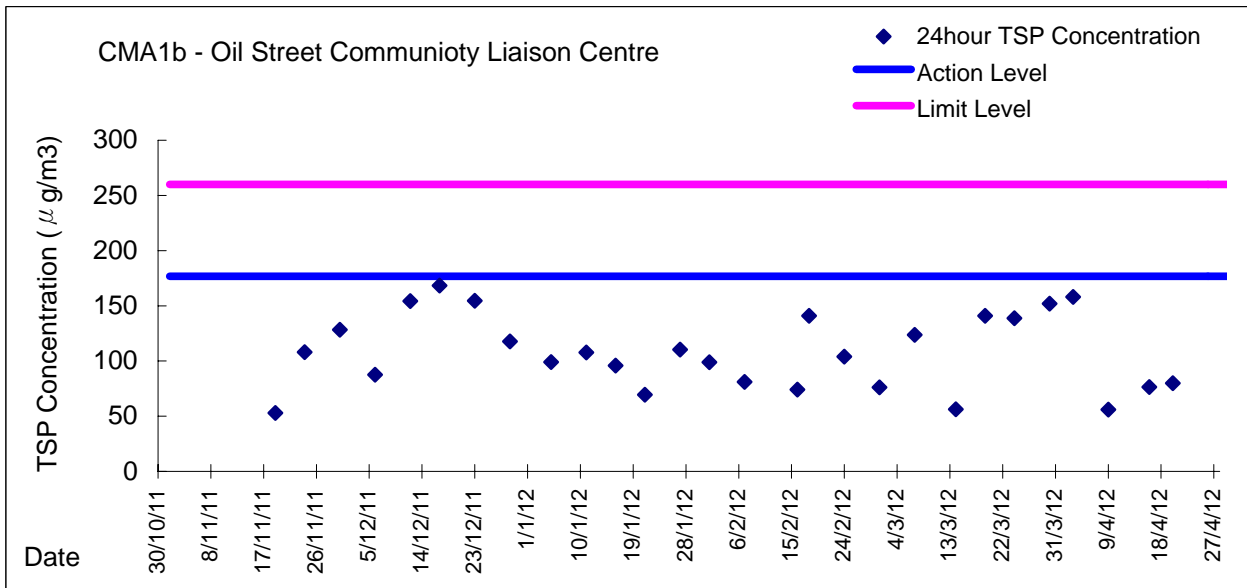
Graphic Presentation of 1 hour TSP Result



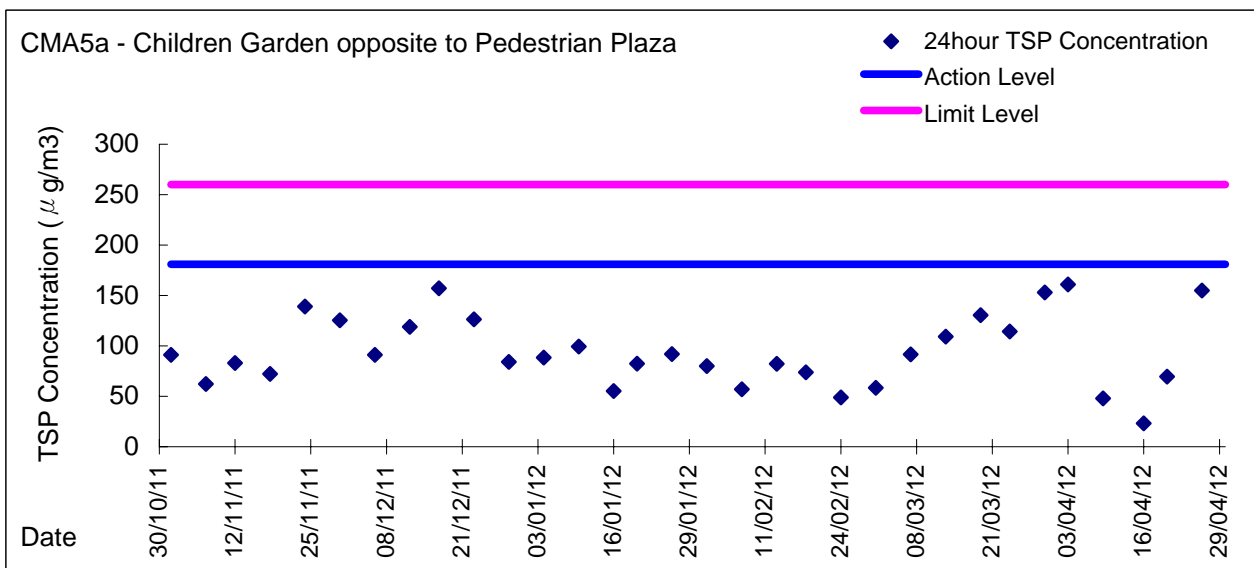
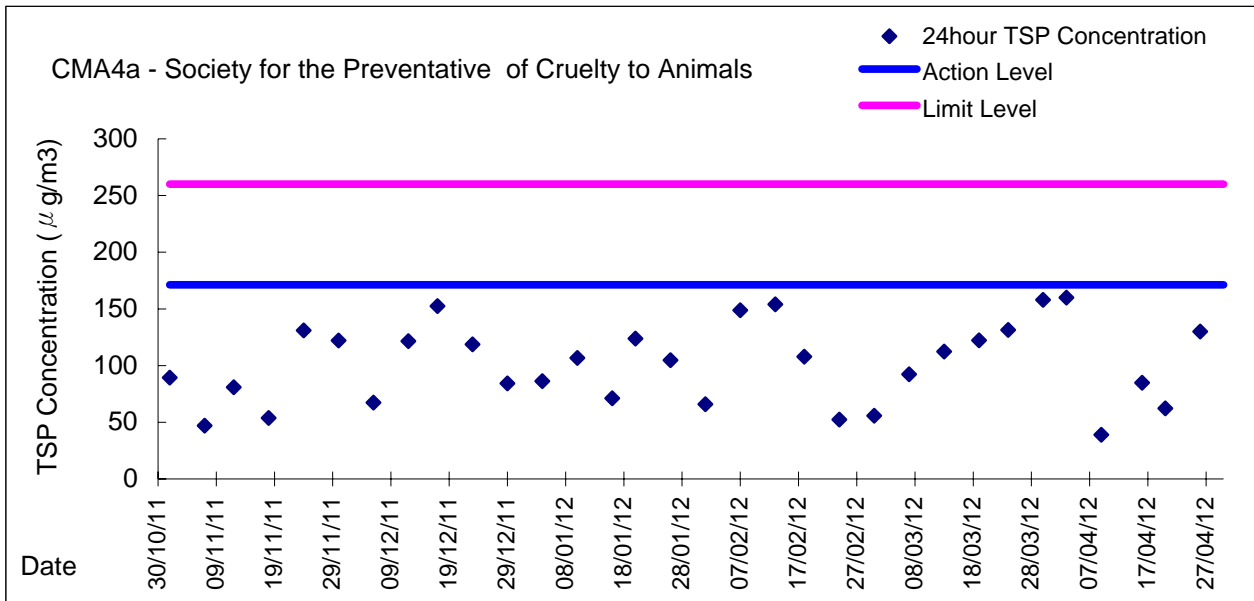
Graphic Presentation of 1 hour TSP Result



Graphic Presentation of 24 hour TSP Result



Graphic Presentation of 24 hour TSP Result



Graphic Presentation of 24 hour TSP Result

